

Alcatel-Lucent OmniVista Cirrus 10

Unified, Simple cloud-based network management

Alcatel-Lucent OmniVista® Cirrus release 10, a new cloud SaaS Network Management solution offers advanced centralized visibility and configuration for Alcatel-Lucent Enterprise Portfolio. Offered as a subscription service, it provides a scalable, resilient, secure, native, cloud-based network management system for unified access. Relying on state-of-the-art microservices architecture and developed with the latest Cloud methodologies and tools, OmniVista Cirrus Release 10 facilitates your digital transformation. It features intuitive configuration workflows, comprehensive troubleshooting for LAN & WLAN, real-time and historical monitoring. With advanced zero trust access policies for visibility and control, OmniVista Cirrus 10 offers total enablement for Internet of Things (IoT) with micro-segmentation, and advanced identification of network-connected devices.

OmniVista Cirrus provides an easy-to-deploy, effective way to provide Orchestration over the cloud and monitor Alcatel-Lucent OmniAccess® Stellar Access Point infrastructure and OmniSwitch devices. It provides a single point of management for advanced analytics and proactive service assurance. Unified Policies Access Manager (UPAM), a Network Access Control (NAC) embedded module includes enterprise-wide authentication, role management, policy capabilities for guest access, and BYOD. OmniVista Cirrus is designed to improve wireless user insights by providing detailed user Quality of Experience (QoE) and behavior analytics.

OmniVista Cirrus is a subscription-based service that facilitates alignment with your new business and budget imperatives. Ease of purchasing, provisioning and ongoing daily operations are at the core of OmniVista Cirrus. Shifting to a cloud-based network management solution with OmniVista Cirrus simplifies digital transformation by reducing cost and administrative IT burden. OmniVista Cirrus protects your network infrastructure investment by adapting to changing business needs without the expense of “rip and replace.”

OmniVista Cirrus sets a new IT experience standard for simple yet powerful capabilities. It can scale and adapt to your business requirements. It offers advanced visibility and control over users and applications. By focusing on core IT operations, the comprehensive management OmniVista Cirrus solution makes it easy to improve application performance and troubleshoot issues in deployments with distributed locations and limited IT staff..

OmniVista Cirrus, as a native cloud-based network management platform backed with a microservices architecture, delivers valuable outcomes such as continuous improvement without downtime, always up to date, scalability, and security. The automatic software update, including critical security patches, improves security and Vulnerability fixes and best practices compliance.

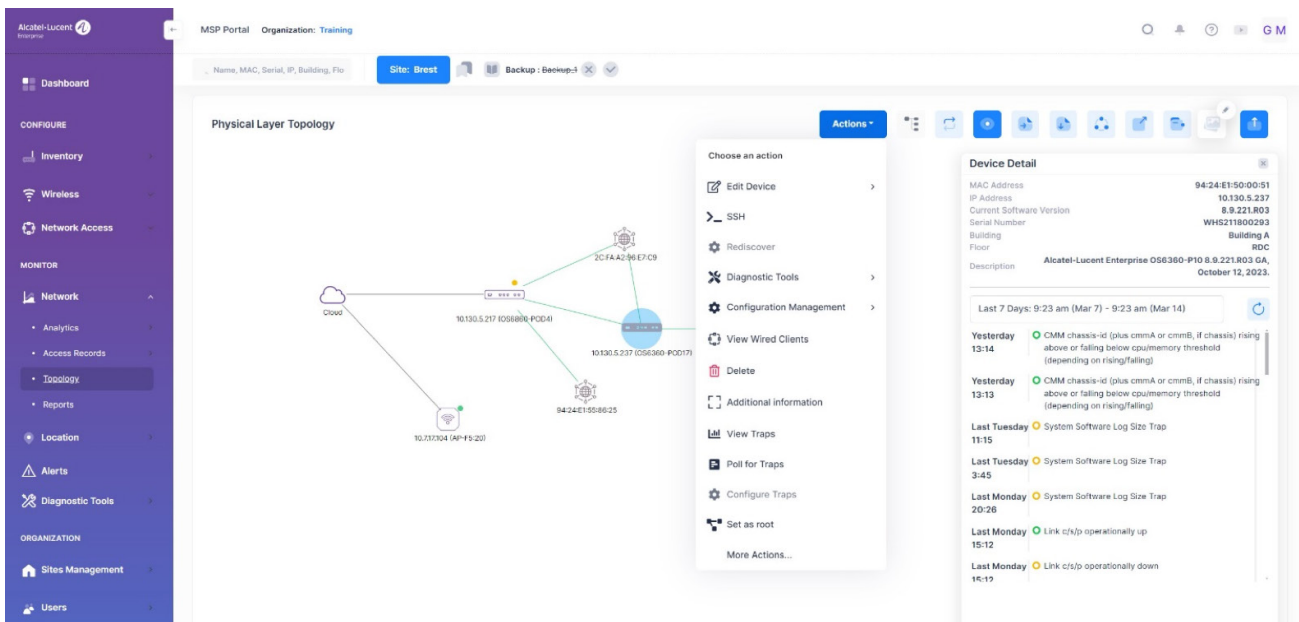
Features	Benefits
Investment protection	<ul style="list-style-type: none"> Minimal device reconfiguration when migrating from on-prems to Cloud based deployment with Alcatel-Lucent Enterprise devices Full Solution support for Alcatel -Lucent Enterprise portfolio operating either as Capex devices or under Network as A Service (NaaS) Opex operating models for optimal cost flexibility
Simplified and Flexible Ordering	<ul style="list-style-type: none"> Simplified license schema, reducing ordering management with a single license covers all Edge devices from OmniAccess Stellar Access Points (APs) to OmniSwitch Edge centric Stackable models. Flexible subscription duration and payments terms aligned with financial IT requirements
Simplified IT	<ul style="list-style-type: none"> Cloud Hosted service removing Infrastructure management and costs, providing data security and constant protection, and security updates. Continuous delivery of innovations without service disruption
Multi-site management	<ul style="list-style-type: none"> Provides centralized management of multiple organizations or physical sites. Consolidates critical management information from across the entire network for a global and consistent network experience.
Multi-tenancy services	<ul style="list-style-type: none"> Multi-client level with simplified network administration Easily control who has access to which client network and tenant with the appropriate role-based network administration credentials See all relevant management statuses, all-important network events and alerts from a single dashboard
Highly scalable	<ul style="list-style-type: none"> Subscription model designed to scale and adapt to your business transformation imperatives and new business model Cloud elasticity to support small to large cloud scalability, from small to large network deployments without reconfiguration
Highly available	<ul style="list-style-type: none"> Hosted in multiple regional data centers with best-in-class availability and resiliency Maximum availability is ensured with backup and redundant services and disaster recovery provided by each data center
Highly secure	<ul style="list-style-type: none"> Software as a Service (SaaS) application hosted in SOC1 and SOC2 data centres OmniVista Cirrus with separation of out-of-band control plane (management traffic) and user data Secure communications with the highest level of protection using certificates ranging from a mutual cloud to device authentication Multi-Factor Authentication (MFA) to secure network administration
Simplified onboarding and provisioning	<ul style="list-style-type: none"> Lower costs by enabling the deployment of new devices in minutes and without on-site support visits, eliminating repetitive tasks and on-site support visit Simplified devices onboarding process with Zero-touch provisioning for Stellar access points and for OmniSwitch through template automation Minimal network expertise is required for initial enterprise network setup and daily operations, offloading IT resources.
Advanced monitoring and troubleshooting	<ul style="list-style-type: none"> Comprehensive unified wired and wireless dashboard for pro-active monitoring and simplified troubleshooting for pro-active monitoring and simplified troubleshooting Network health and Wired and Wireless assurance provide global network-wide visibility into key Key Performances Indicators (KPI) for troubleshooting process and resolution. Troubleshooting with alarm and event lists with historical and real-time data view Quickly identify potential Wi-Fi connectivity issues related to DHCP, DNS, authentication failures through Quality of Experience (QoE) measurements Gain visibility on wireless client health performances
Integrated NAC	<ul style="list-style-type: none"> Alcatel-Lucent Unified Policy Access Manager (UPAM) integrates identity, policies and user/device roles in a single user interface, reducing the learning curve and minimizing IT resources Enterprise 802.1x authentication with internal or external sources including RADIUS, AD, LDAP, Microsoft Entra AD (Microsoft Azure AD) Extensive guest access and BYOD support for onboarding and managing visitor and employee personal devices Fully customizable captive portal with integrated credentials management for email, SMS, and social Login (Facebook, Microsoft 365, Rainbow™ by Alcatel-Lucent Enterprise)
IoT enablement	<ul style="list-style-type: none"> Seamless discovery and categorizing of network IoT devices Automatic enforcement, with Access Role Profiles, providing micro-segmentation for Operational Technology (OT) networks.
Device software compliance	<ul style="list-style-type: none"> Optimal OmniAccess Stellar AP firmware update, for security compliance and vulnerability management Device software version upgrade based on Scheduling, (best software version and AP group selection) reducing maintenance window

OmniVista Cirrus Catalog

The screenshot displays the 'Device Catalog' interface in the Alcatel-Lucent OmniVista portal. The left sidebar contains navigation options like 'Inventory', 'Device Catalog', 'Device Troubleshooting', and 'Hardware Licenses'. The main area shows a table of devices for the 'Simu US' site. The table columns include: FRIENDLY NAME, MAC ADDRESS, IP ADDRESS (v4), LAST SEEN, SERIAL NUMBER, LICENSE STATUS, LICENSE EXPIRY DATE, SITE NAME, TYPE, and CURRENT SOFTWARE VERSION. The table lists 30 devices, each with a 'License Status' of 'Valid License' and a 'Current Software Version' of '4.5.5.052'. The interface also includes search bars, filters, and an 'Export' button.

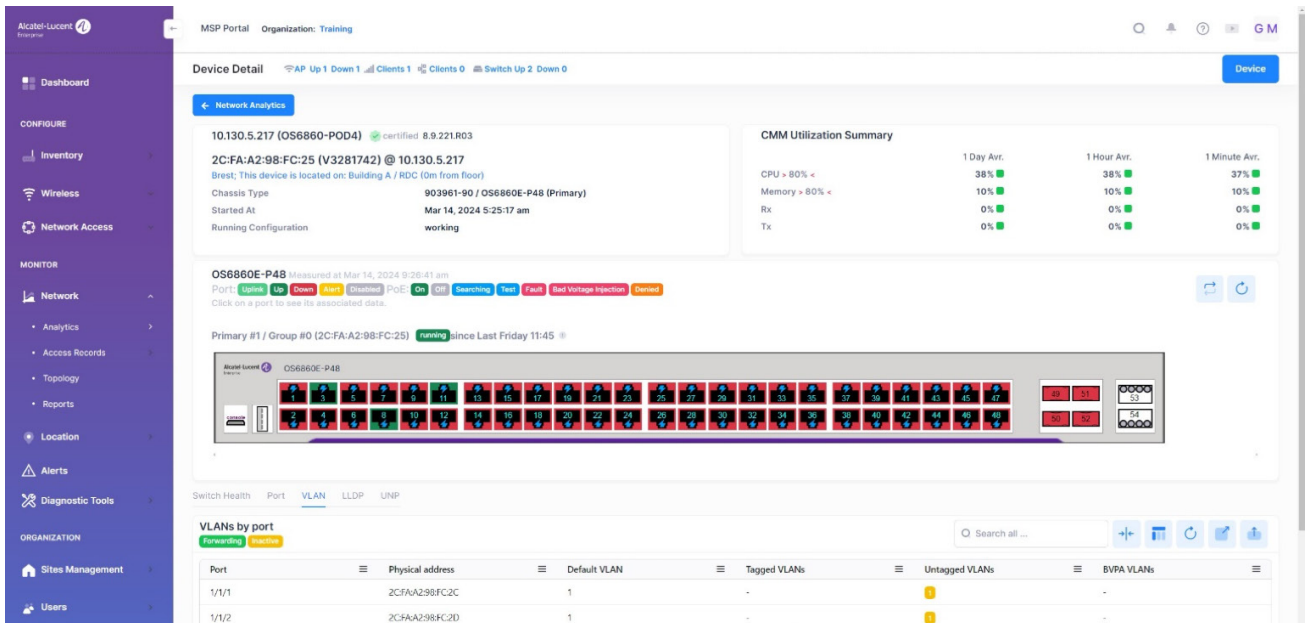
OmniVista Cirrus Catalog provides an overall overview of your network. A single point to control the status of all the network devices: license information, device type, subscription status, connectivity, software release, location, etc.

OmniVista Cirrus Topology



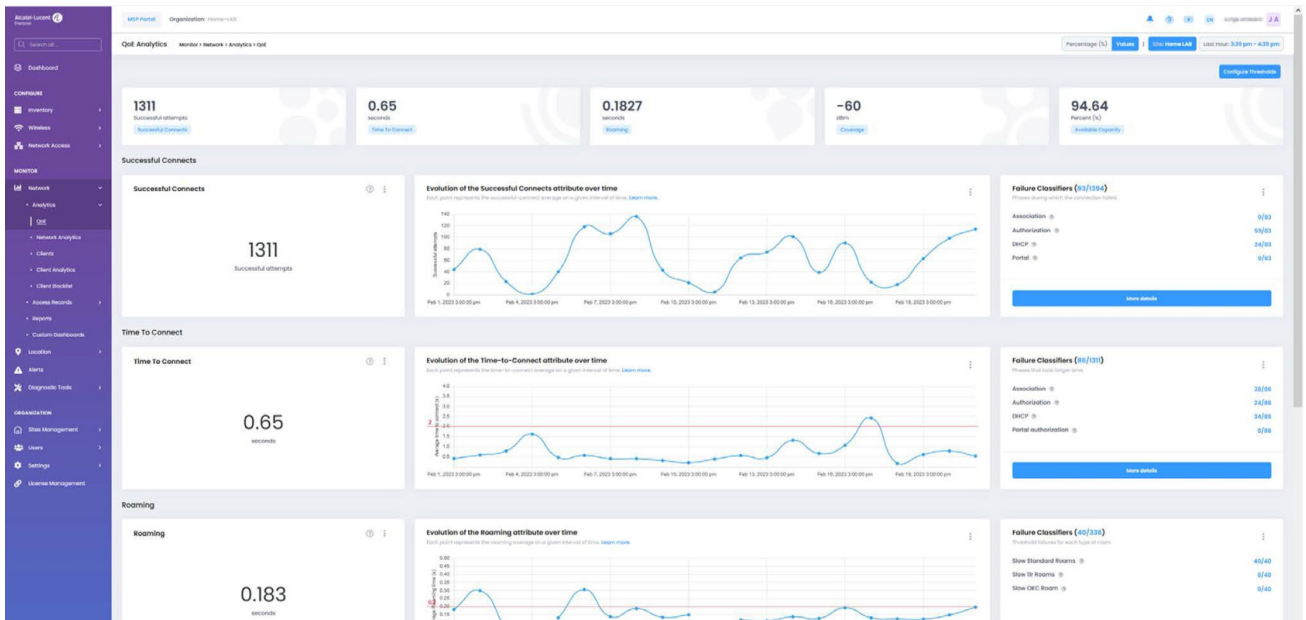
OmniVista Cirrus Topology provides unified WLAN and LAN map layout including device status and graphical network uplink representation

OmniVista Cirrus Device View



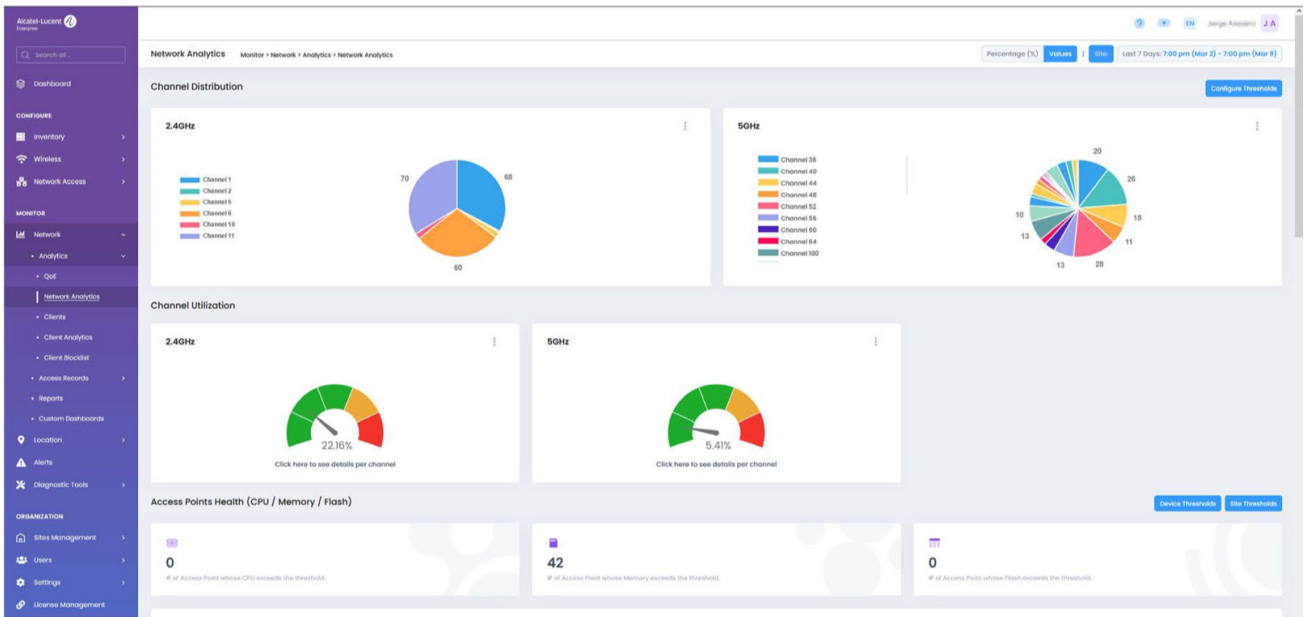
OmniVista Cirrus Device View shows real-time extensive device insights for Key health status and configuration parameters (PoE, VLAN , LLDP, UNP)

OmniVista Cirrus QOE Analytics Dashboard



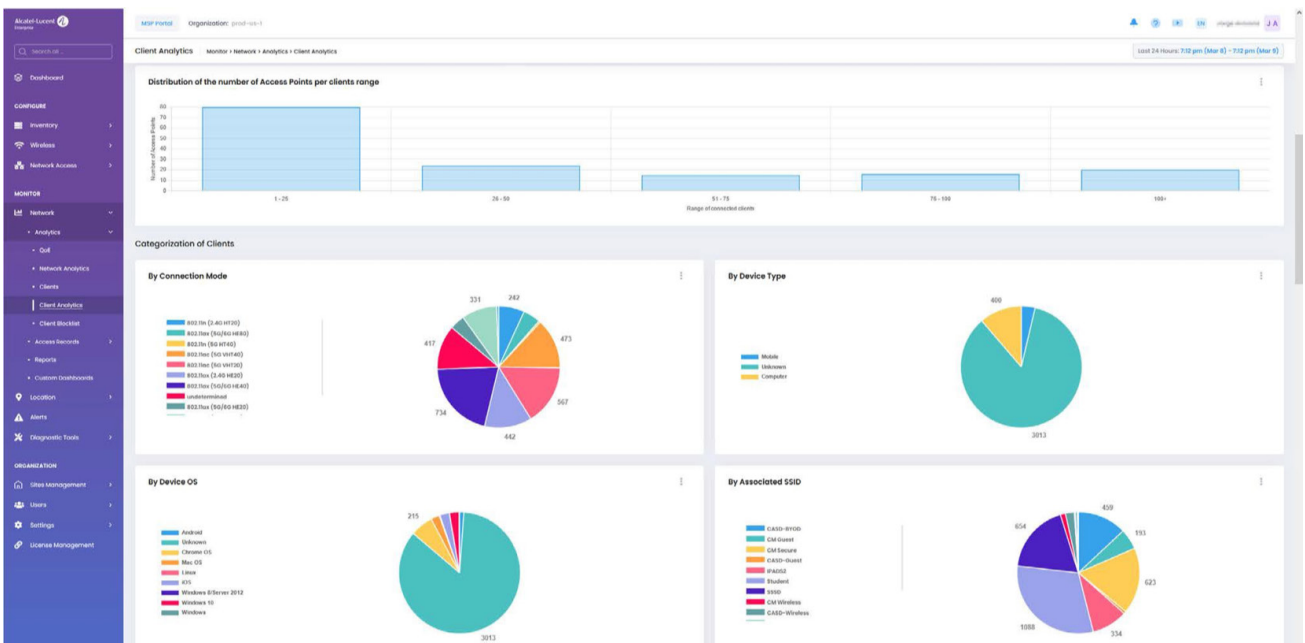
OmniVista Cirrus QoE Analytics shows the quality experienced by the connected clients. Successful connects, time to connect, roaming time, coverage, and available capacity trends allow for problem identification (i.e., DHCP server down) and troubleshooting starting point.

OmniVista Cirrus Network Analytics Dashboard



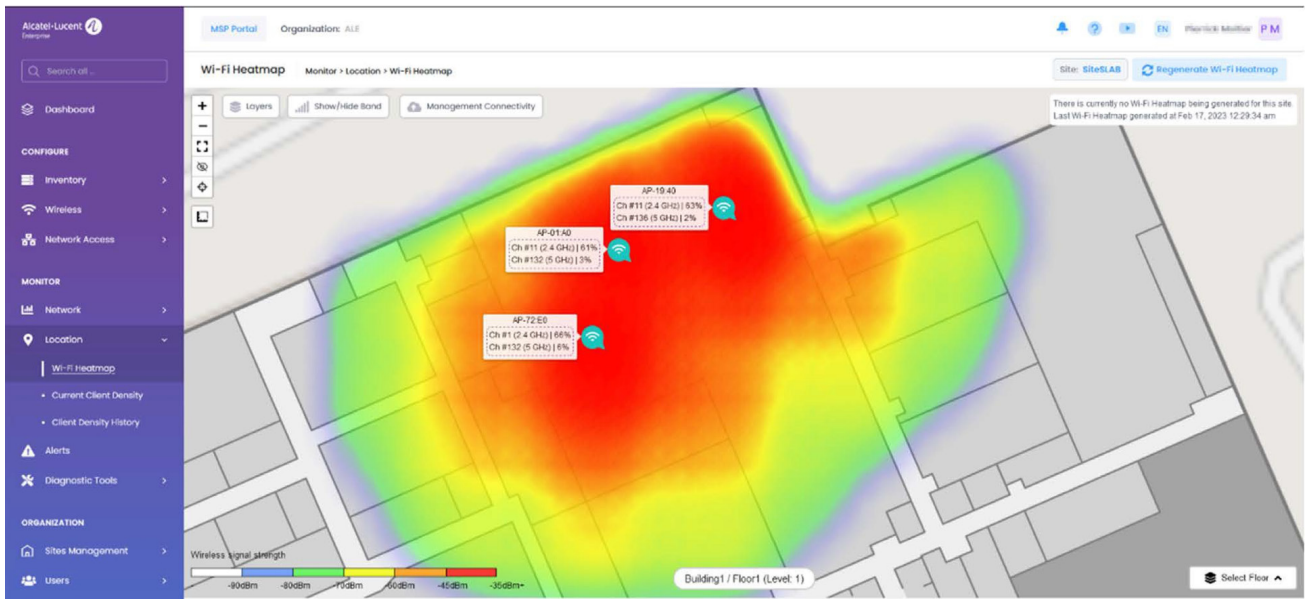
OmniVista Cirrus Network Analytics shows the channel distribution, utilization, and high-level view on Access Points Health. The customizable timeframe allows for monitoring of the WLAN network's health.

OmniVista Cirrus Client Analytics



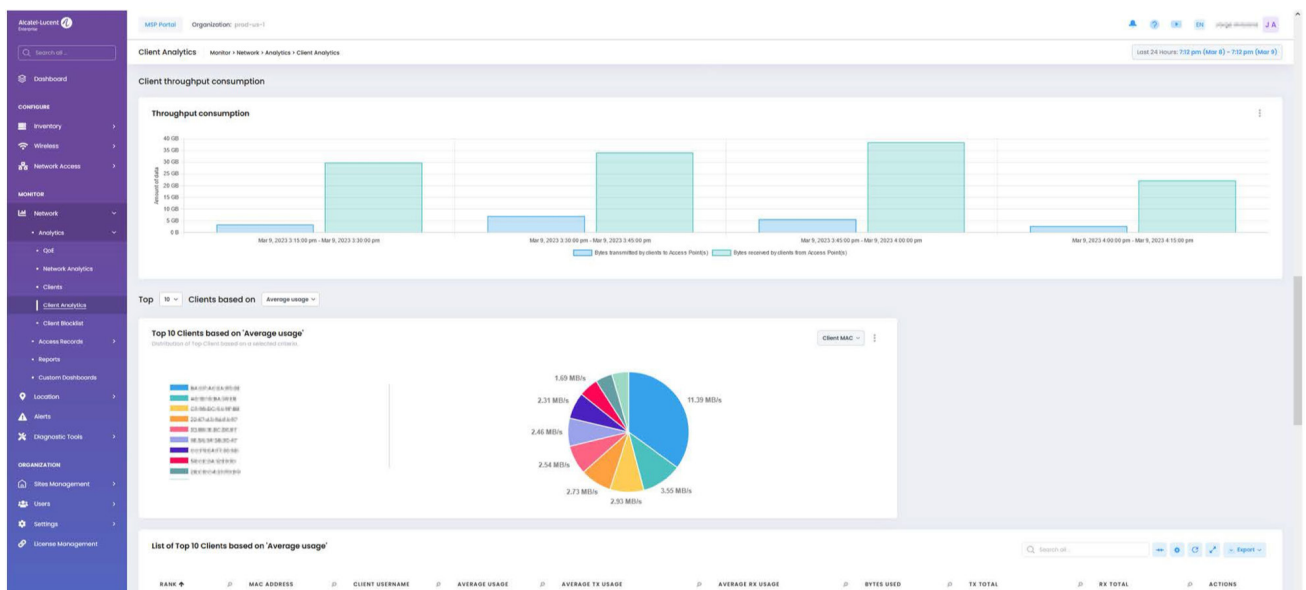
OmniVista Cirrus Client Analytics with detailed information about the connected clients: Device type, Operating System, Wi-Fi standard, SSID most used. It can monitor and control which devices are allowed in the network.

OmniVista Cirrus Heatmap



OmniVista Cirrus Heatmaps help IT identify areas with poor WLAN coverage or high client density. This information is valuable for capacity planning or business needs.

OmniVista Cirrus 10 Client Analytics



OmniVista Client Analytics shows connected clients' throughput consumption. Monitor and ensure devices receive a fair slice of the bandwidth.

Product specifications

Simplified ordering and activation

- Subscription model with flexible terms and duration
- Streamlined subscription process from license ordering to subscription activation
- Customer self-service sign-up for tenant registration and service activation

Simplified deployment

- Plug-and-play. No need for IT staff on-site. Once the physical installation and cabling are done, the Network device will use the Internet connection to self-provision. The IT staff can now comfortably configure the network.
- New APs inherit all the configuration from the AP-Group, including radio-frequency and wireless security options

Security

- Traffic from the site to OmniVista Cirrus is limited to encrypted management and authentication
- Certificate-based authentication and encryption; simplified certificate generation
- Layer 2 VPN encryption and tunneling services between network device and OmniVista Cirrus
- Administrative management is secured over HTTPS/TLS
- RADsec for user and device authentication
- 802.1X client configuration for Stellar Access Point configuration
- Role-based multi-tenant administrator with extended granularity
- Firewall-friendly, eliminating complex security policies.
- Strong password policies, including Two-factor authentication available at the tenant or the multi-tenancy level

Multi-tenancy services

- Allow Managed Service Providers (MSP) and large organizations to effectively manage and monitor multiple associated customers
- Advanced dashboard capabilities for multi-tenancy services including device inventory, alerts and status
- The multi-tenancy model operates under a hierarchical model, with Managed Service Provider on top, managing the different tenants and organization and sites structure

- Multi-tenant architecture with secure account separation for each tenant with role-based administration (RBAC) per site

Cloud-native architecture

- Highly available micro-services architecture for large scale operations and maximum resiliency
- Unlimited number of instances; each instance capable of supporting several multi-sites and organizations
- 100% programmable platform, fully extensible and open solution, through APIs, for network automation and seamless integration with third-party solutions
- Elastic growth from a single network element to thousands of devices per organization
- Cloud velocity with new features incorporated seamlessly, without service disruption

Wi-Fi real-time heatmaps

- Wi-Fi client density heatmaps: Identify high- and low-density areas on the site map, simplifying wireless coverage optimization
- Wi-Fi coverage heatmaps: Identify good and poor coverage areas on the site map
- Enable smart capacity planning

Wi-Fi service provisioning

- Profile-based configuration
- SSID profile has all the information related to SSID: Name, encryption, authentication, device-specific PSK, general bandwidth limits, Quality of Service (QoS), tunneling capabilities and more
- Access Role Profiles (ARP): Contain all the information related to the profile to apply to a device connecting to the network including specific QoS, tunneling, VLAN, bandwidth and more
- Radio-Frequency (RF) profiles contain radio frequency settings such as allowed bands, regulatory domain settings, channels, association rates, short/long guard intervals
- Profiles apply for the configuration of all the functions of the WLAN network: AAA profiles, QoS unified policies, tunnel profiles, location profiles, period profiles and more
- AP-Group profile is the management entity for a set of APs with a combination of different SSID, ARP, RF and other profiles. All APs in the same group will inherit the AP-Group configuration

Wired Service Provisioning

- Simplifies and accelerate onboarding, configuration and provisioning with flexible flexible options of templates and UI groups for all supported network devices
- IT admins can instantly apply or modify configurations across multiple devices

Configuration lifecycle

- Optimal device firmware selection, reducing IT involvement with automatic software deployment.
- Alcatel-Lucent firmware and software versions for LAN and WLAN network devices are advertised from OmniVista Cirrus as they are production released, ready-to-use and deploy, providing the latest features and best compliance

Unified Network Access Control

- Unified Policy Access Manager (UPAM) for centralized role-based access policies with built-in authentication
- Authentication strategy with Microsoft Entra Access Directory (formerly Microsoft Azure AD), for 802.1x EAP-TTLS for enterprise access
- Advanced guest and BYOD access mobility features, including configuration and monitoring.
- Integrated captive portal with support for social login authentication (Facebook, Microsoft 365, Rainbow)

Assurance and Monitoring

- Single Pane of glass for unified Monitoring view , streamlining troubleshooting
- Device view for omniSwitch and Stellar Access Point Device View for OmniSwitch or Stellar APs, with detailed information about the network device: SSID, Radios, Ports, VLANs,
- Client View, with detailed information about connected clients list, for control, monitoring and troubleshooting
- Reporting module offering an extensive set of graphical , easy reporting capabilities on device connectivity, Configuration settings such as SSID (network and application health, throughput

Dashboard

- Rich web-based dashboard, providing visibility and control anywhere from a central cloud application
- Multi-tenant dashboard with all managed tenants, their sites, admin users, devices associated with the tenant, licensing status, audit logs and alarms, providing an overall view of the tenant at-a-glance.
- Dashboard with extensive Key Performances Indicators (KPIs) for LAN & WLAN over time, providing global network health

Network Topology

- Graphical Intuitive representation of the Unified LAN & WLAN network infrastructure
- Topology representation including graphical and visual cues (type and hardware model, with device visibility, and notification status
- Extensive view with visual status including network uplink and Adjacencies (LLDP), Link aggregation, Wireless Mesh links

IoT enablement

- IoT inventory with end-point fingerprinting gives complete spectrum visibility of all connected devices across the network with complete contextual information
- Contextual information of all connected devices, including key attributes such as device type, vendor, hardware version, network location, and time information
- IoT enforcement with access role profiles automates secure network-wide access based on IoT classification
- Monitor and control network IoT devices with IoT analytics

Wi-Fi assurance

- Qualify the Wi-Fi user experience with QoE metrics such as time-to-connect, roaming time, coverage quality, authentication time among others
- Monitor threshold metrics and simplify troubleshooting: If authentication time increases, the external authentication source may be unavailable
- Troubleshooting and Root-Cause-Analysis (RCA): Failure counts per failure type, failure detection over time, threshold management, notifications and alarms.
- Analyze client behavior with client session metrics: When users connect, with which devices and for how long, websites most visited, client throughput consumption over time
- Monitor channels and bands, clients per AP, per band, per SSID, bandwidth consumption
- Live and historical client lists, blacklist clients among others
- Monitor authentication records to detect anomalies, user authentication failures, correct role assignments
- Monitor captive portal authentications, guest self-registration records, guest and BYOD devices, IoT devices and more
- Configurable duration for optimal data retention

Unified Assurance and Monitoring

Diagnostic tools

- Define relevant network events and monitor them over time.
- Define event responders for real-time notifications
- Access from OmniVista Cirrus to on-site APs using HTTPS or SSH
- One-click support gathering information for easy troubleshooting.

Open API

- OmniVista Cirrus is built as a native API platform
- Open approach for easy integration into ecosystem application solution
- The authenticated and encrypted API is open and stable, with extensive documentation and use case sample
- Easy to integrate with other applications such as Alcatel-Lucent Rainbow

Privacy and regulatory compliance

- Hosted in regional data centers based on customer geographical location for data and regulatory compliance, with high availability and disaster recovery
- Hosted in SoC 1 and SoC 2 compliant data centres
- Energy-efficient data centres
- Compliant with applicable data privacy, security and regulatory framework in the United States, European Union and abroad
- Compliant with General Data Protection Regulation (GDPR) and California Consumer Privacy Act (CCPA)

Technical specifications

OmniVista Cirrus-supported devices

- All OmniAccess Stellar WLAN Access Points with minimum AWOS release 4.0.6 (AP1101, AP1201H models not supported)
- All OmniSwitch Devices with minimum AOS release 8.9R1 (OS9900 Series not supported)
- For further details on supported devices and required minimum release refer to <https://tinyurl.com/5xwctysv>

Minimum browser requirements

- Google Chrome minimum version 63
- Mozilla Firefox minimum version 56
- Microsoft Edge Chromium version 110

Ordering specifications

SKU	Description
OVC-C-ESS-M	OmniVista Cirrus 10 - Public Cloud – License for Essential Subscription - Covers all supported Stellar Access Points & Essential OmniSwitch devices operating with AOS 8 release (Refer to the table for the list of supported devices per license). List Price defined as per Month. Require Subscription Configuration for duration (min 12-to-60-month max) and choice of payment terms (Monthly, Quarterly, Annually, Prepaid). Includes SaaS software and maintenance update and tech Support access. Excluded device hardware & maintenance support.
OVC-C-ADV-M	OmniVista Cirrus 10 - Public Cloud – License for Advanced Subscription - Covers all Advanced OmniSwitch devices supporting AOS 8 release (Refer to the table for supported devices per license). List Price defined as per month. Require Subscription Configuration for duration (min 12-to-60-month max) and choice of payment terms (Monthly, Quarterly, Annually, Prepaid). Includes SaaS software and maintenance update and Tech Support access Excluded device hardware & maintenance support

LICENSE	SUPPORTED DEVICES
Essential	Stellar Access Points, OS6360, OS6465, OS6560, OS6570M series
Advanced	OS6860, OS6860E, OS6860N, OS6860P, OS6865, OS6900 series

Included:

- OmniVista Cirrus SaaS Network administration software and maintenance update and tech Support access for licensed devices
- Software upgrade and update for licensed devices, limited to the versions made available through the OmniVista Cirrus Cloud service.
- Global Welcome Centre access for OmniVista Cirrus SaaS service and support

Not included:

- Device hardware maintenance and support plans sold separately